

# INTRUSION ALARM

## Secure your critical Infrastructure

v1.1, 2025-02-28

Today's highly connected society consist of dense network of fiber and electrical wirings connected to cabinets and hubs.

These cabinets are today often unlocked and can be accessed with simple tools. Even doe they can contain sensitive infrastructure.

Sabotage to these units can severely damage the infrastructure and create blackouts and costly repairs.

Micropol has developed a concept for a fiber optic based alarm system especially designed for protecting critical infrastructure cabinets and joint closures from intrusion. The intrusion alarm can be fitted to all kinds of closed compartments and can use the existing fiber network to the cabinets.

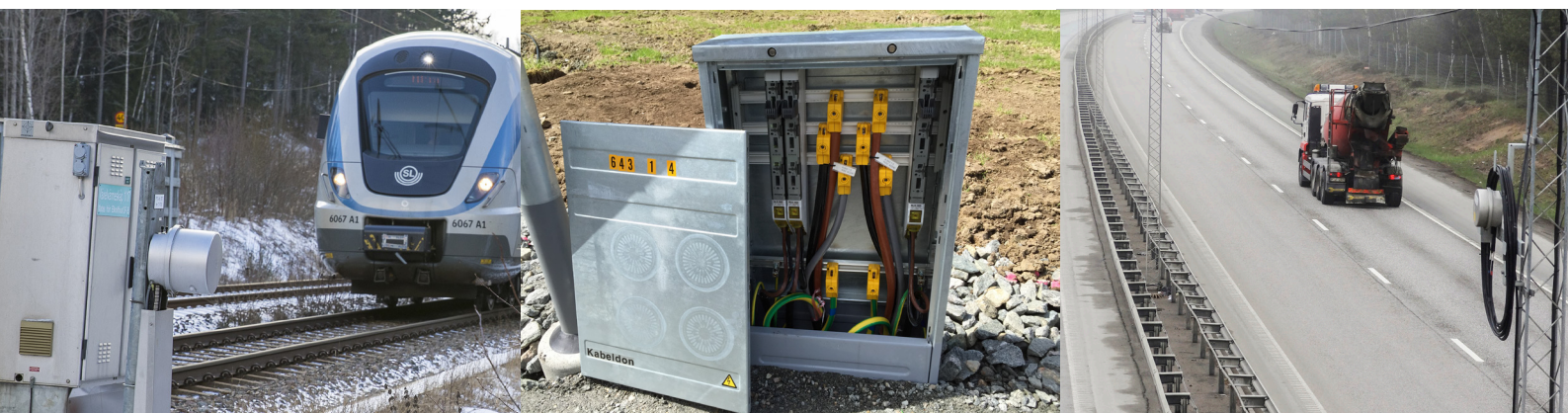


### Features

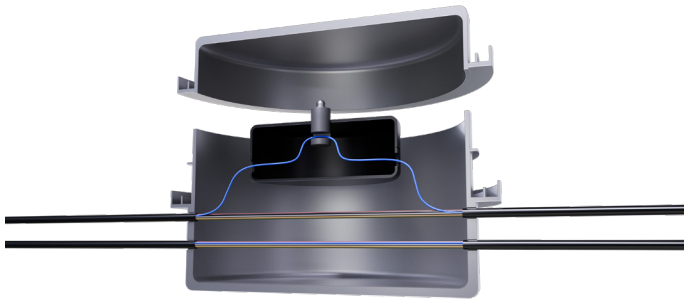
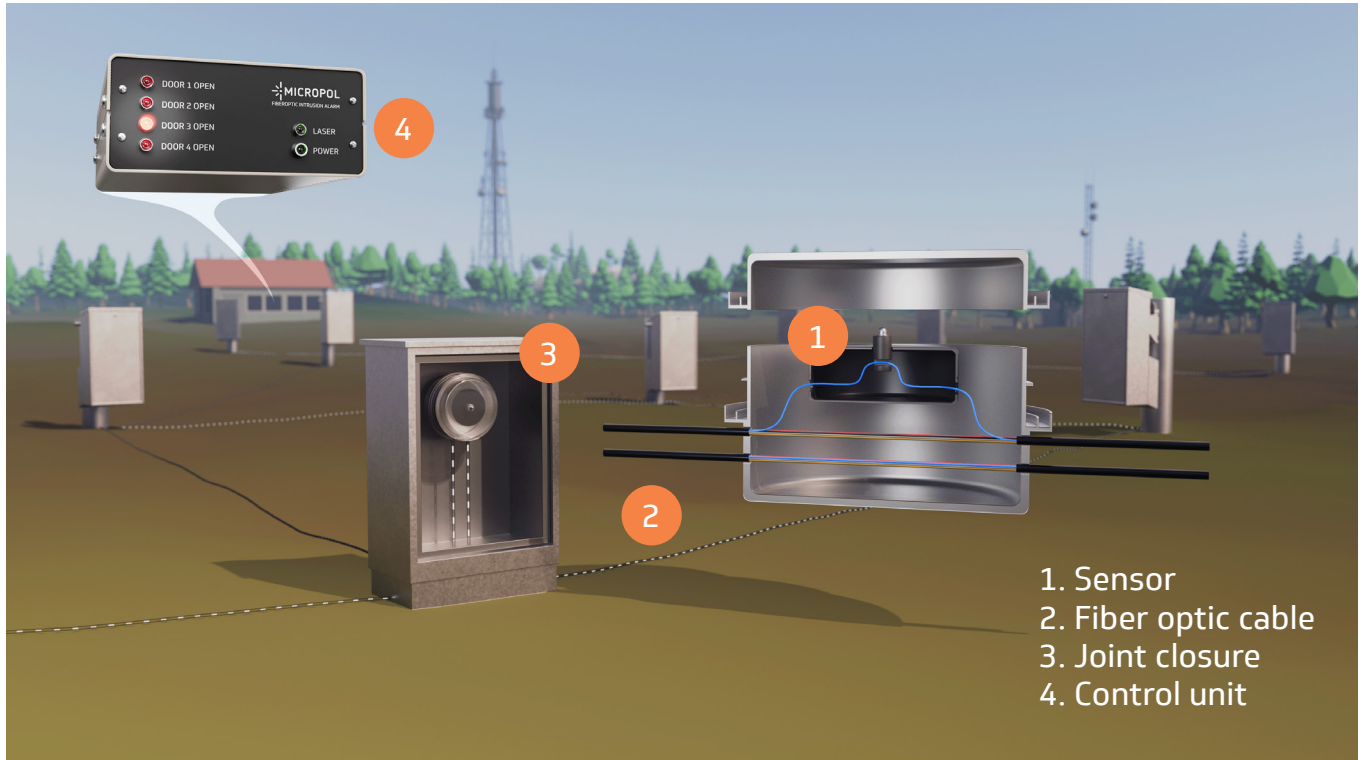
- No power needed for the sensor
- Up to 40 sensors per circuit
- Uses already existing fiber optic network
- Push notifications can be delivered in various ways
- Suitable for a variatiy of cabinetes

### Applications

- Joint closures
- Fiber to home
- Power distribution
- Wells & distribution hubs



## How does the Intrusion alarm work?



### Sensor

The sensor can be installed to all kind of closed compartments.

The sensor uses the already established fiber network. (2 optical fibers needs to be available)

Up to 40 sensors can be installed per alarm circuit.

Distance between the sensors can be up to 100 km.

When the sensor switch is activated, there is change in the back reflection and the alarm goes off.



### Control Unit

The control unit is typical installed in a server room or in a fiber optic node. When the sensor is activated the control unit detects a change in the back reflection in the fiber optic cable and trigger the alarm. The control unit can identify exactly which sensor that has been activated.

Also available for 19" rack

Power supply: 230V